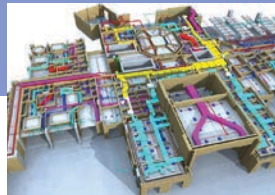




Remember
Civil
Encourage
where
communications
representative
ambassador
my criticism
on line
insight
professional
thorough
discipline
transparent
times
cordial
gain
credibility
accurate
deliberation
appropriate
integrated
participation
department
position
CivilServ
Wherever



DOCTOR OF PHILOSOPHY IN CIVIL ENGINEERING

■ FACULTY OF ENGINEERING

DOCTOR OF PHILOSOPHY IN CIVIL ENGINEERING

The Ph.D. in Civil Engineering program is research-intensive, designed for the pursuit of advanced interdisciplinary studies focusing on application in industrial settings. The main mission is to support rapidly progressing social and economic development leading to more complex demands in engineering skills, such as research and development in technology for modern industries, requiring and depending more on knowledge capital than traditional labor-intensive human capital or materials.

Three of our outstanding research centers devoted to the field include:

- Research Centers for Industrial Design, Decision and Development: ID³, and Bridge and Railway Structural Systems Research Unity Infrastructure and Transportation Center
- Development and Research of Innovative Vehicle Engineering: DRIVE
- Mechatronics and Industry Laboratory: MI-LAB.



Objectives

Graduates from the program are expected to master the following:

- Advanced knowledge and expertise in civil engineering research.
- Competitive competence at international standards.
- Professional ethics.

Admission

In accordance with the Graduate School Rules and Regulations. The program committee reserves the rights to require more qualifications as deemed appropriate.

Medium of Instruction

Thai and English

Research Focus

- Infrastructure
- Transportation
- Industrial Applications

Requirement for Graduation

Apart from the Graduate School Rules and Regulations, doctoral candidates are required to publish a part of the dissertation in an academic journal and pass the criteria or coursework, English competency, and oral defense of the dissertation.

